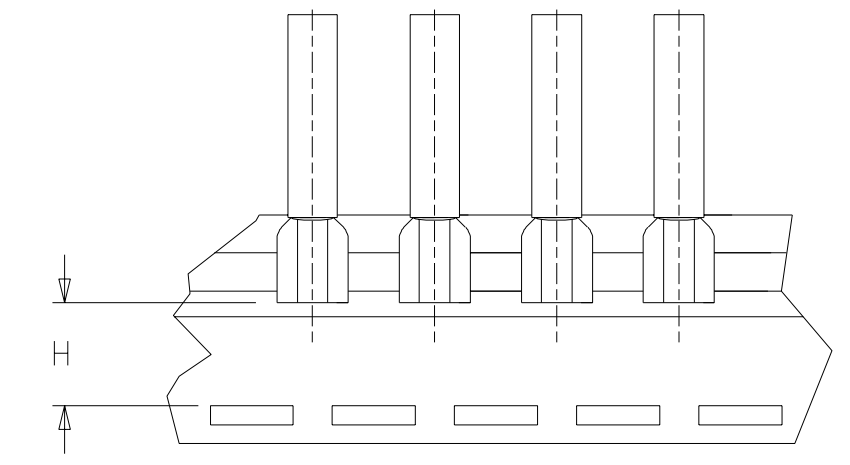
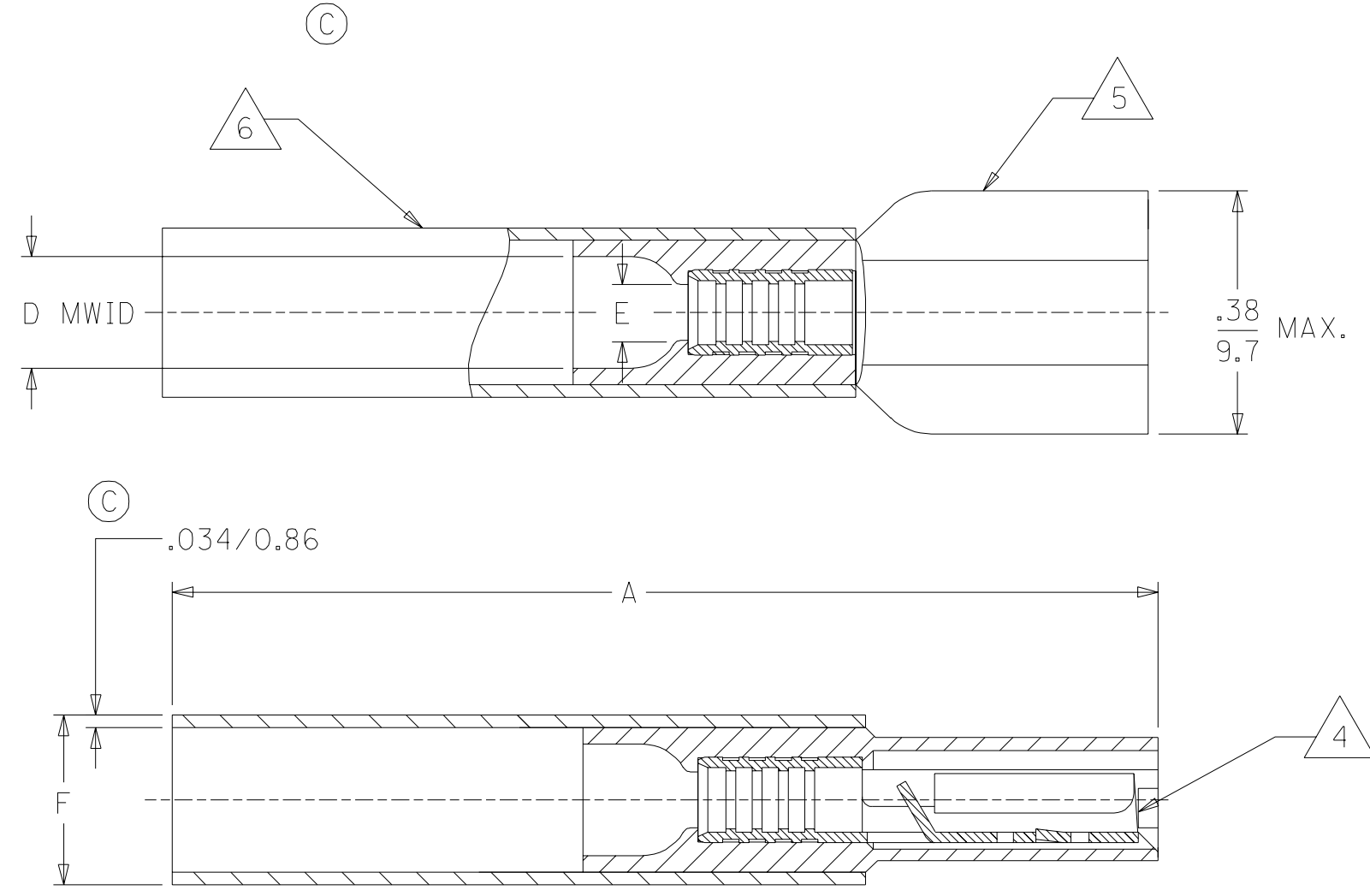


MATERIAL NUMBER	ENGINEERING NUMBER	TAPE MATERIAL NUMBER	TAPE ENGINEERING NUMBER	WIRE SIZE AWG	WIRE SIZE MM SQ.	FITS MALE TAB	PERMA-SEAL COLOR	A MAX.	D MWID	E MIN	F MAX. DIA.	H ±.010/0.25
191640017	SAA-9261	191640018	SAA-9261T	22-18	.25-1.5	.250 X .032	RED	1.63/41.4	.17/4.3	.083/2.11	.286/7.26	.55/14.0
191640050	SBB-9263	191640051	SBB-9263T	16-14	1.0-2.5	.250 X .032	BLUE	1.46/37.1	.17/4.3	.083/2.11	.298/7.57	.55/14.0
191640076	SC-9281	191640305	SC-9281T	12-10	4.0-6.0	.250 X .032	YELLOW	1.52/38.6	.23/5.8	.140/3.56	.373/9.47	.56/14.2



TAPE MOUNTING DETAIL

- NOTES:
- FEMALE RECEPTACLE CONFORMS TO NEMA.
  - ALL DIMENSIONS SHOWN ARE BEFORE SHRINK TUBING IS HEATED.
  - "MWID" DENOTES MAX. WIRE INSULATION DIA.
  4. TAB MATERIAL: .018 THK, BRASS, PLATING, TIN.
  5. INSULATION MAT'L: MOLDED NYLON
  6. NIAC TUBING WITH HOTMELT INNER LINER. SEE CHART FOR COLOR.

### SALES DRAWING

WAS CD05335-03 EC NO. ETC2003-0102 DRWN: BRE 03/03/20 CHK: HEB 03/03/20 APPR: RWD 03/03/20	QUALITY SYMBOLS	GENERAL TOLERANCES: (UNLESS SPECIFIED)	SCALE NO: NE	DESIGN UNITS	THIRD ANGLE PROJECTION	DIMENSIONS:	SHT	REV
	MAJOR $\nabla=0$	mm INCH	NO: NE	<input type="checkbox"/> mm <input checked="" type="checkbox"/> INCH	<input type="checkbox"/> mm ONLY	<input type="checkbox"/> mm <input checked="" type="checkbox"/> INCH		
	CRITICAL $\nabla=0$	4 PLACES ±0. INCH	DRAWN BY & DATE	BRE 02/10/29	TITLE: PERMA-SEAL COUPLER FEMALE RECEPTACLE NIAC			
		3 PLACES ±0. ±.005	CHECKED BY & DATE	HEB 02/10/29	MOLEX INCORPORATED			
	2 PLACES ±0.13 ±.01	APPROVED BY & DATE	RWD 02/10/29	CAD FILENAME	MATERIAL NO.	DRAWING NO.	SHEET NO.	
	1 PLACE ±0.25 ±.	ANGULAR: ±1/2°	SD-19164-020 .DGN	SEE CHART	SD-19164-020	1 OF 1		
		DRAFT WHERE APPLICABLE MUST REMAIN WITHIN DIMENSIONS	THIS DRAWING CONTAINS INFORMATION THAT IS PROPRIETARY TO MOLEX INCORPORATED AND SHOULD NOT BE USED WITHOUT WRITTEN PERMISSION.					